

2
0
1
9

LEXUS BOUTIQUE COLLECTION



C

TABLE OF
CONTENTS

O

N

T

E

N

T

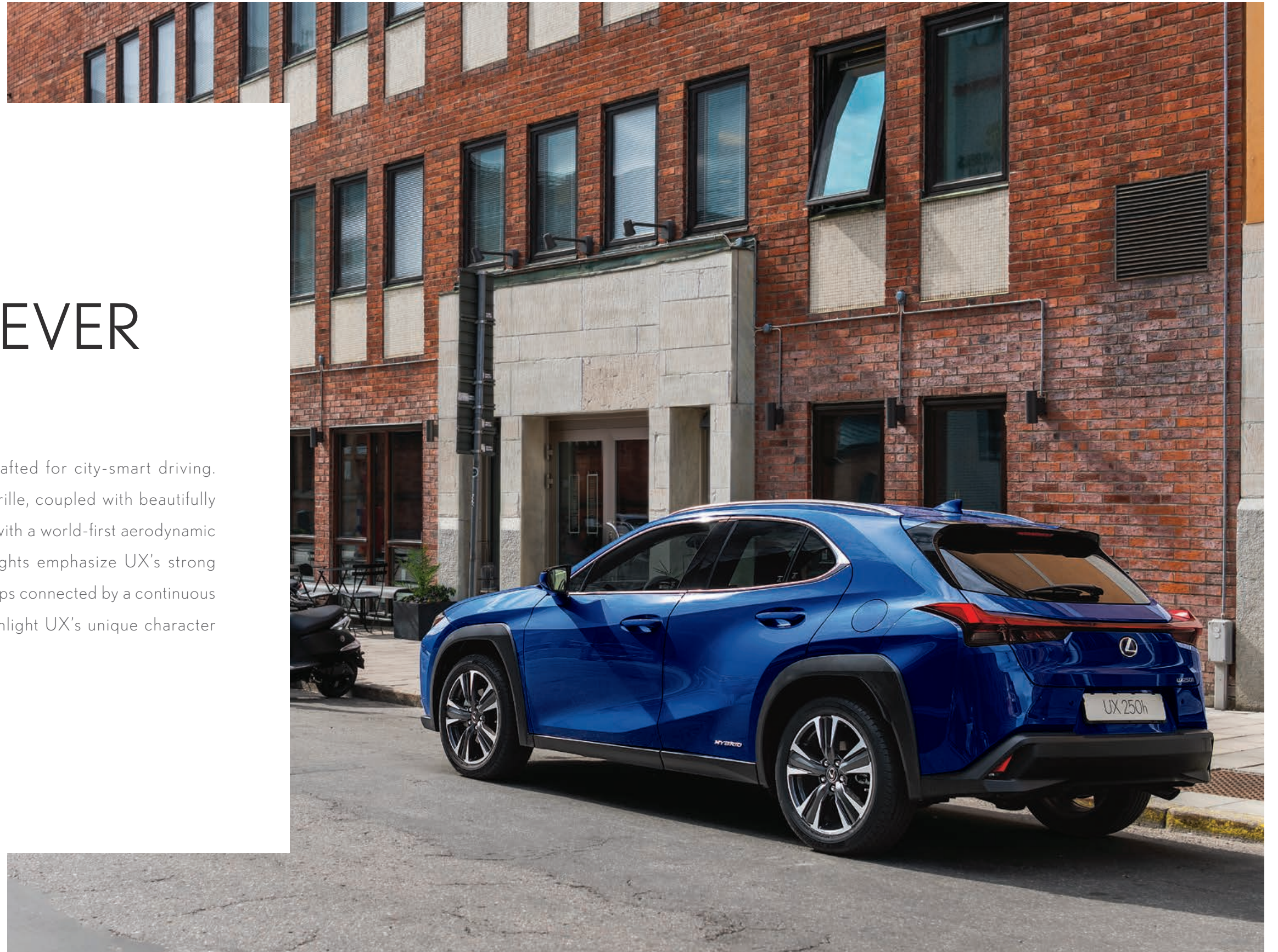
S

	6	APPAREL
	14	BAGS + UMBRELLAS
	20	BUSINESS ESSENTIALS
22		WRITING INSTRUMENTS
	26	CHILDREN
	28	DRINKWARE
36		GOLF
	40	HEADWEAR
	42	KEYCHAINS + CAR ACCESSORIES
46		LIFESTYLE
	48	TECHNOLOGY
	50	WATCHES

LEXUS
UX

THE FIRST-EVER LEXUS UX

The first-ever Lexus UX is perfectly crafted for city-smart driving. A bold iteration of the Lexus Spindle Grille, coupled with beautifully flared fenders, striking aluminum wheels with a world-first aerodynamic design and stunning high-output headlights emphasize UX's strong crossover qualities. Rear combination lamps connected by a continuous single line of 120 LED lights further highlight UX's unique character and cutting-edge design.



STYLISH APPAREL



A.

B.

A. LEXUS MEN'S HEAVYWEIGHT FLANNEL STADIUM JACKET WITH HEAT TECH & MICROFLEECE LINING

Hook & loop tear away hood and mock neck with tricot fleece lining. Features center front technical zipper placket, right welt chest pocket with hidden zipper closure, long sleeves with tricot fleece storm cuffs. There is a security pocket with Anti-RFID lining, a media pocket, and Heat Tech and microfleece lining.

LEX0047-H **MSRP \$264.90**

B. LEXUS WOMEN'S HEAVYWEIGHT FLANNEL STADIUM JACKET WITH HEAT TECH AND MICROFLEECE LINING

Hook & loop tear away hood and mock neck with tricot fleece lining. Features center front technical zipper placket, right welt chest pocket with hidden zipper closure, long sleeves with tricot fleece storm cuffs. There is a security pocket with Anti-RFID lining, a media pocket, and Heat Tech and microfleece lining with all over double needle stitching.

LEX0048-H **MSRP \$264.90**

C. LEXUS UNDER ARMOUR LADIES' CORPORATE REACTOR JACKET

The 100% polyester fabric is windproof to shield you from the elements. Coldgear® reactor intelligent insulation adapts to any activity. The jacket has a ladies loose fit and packs easily into right side hand pocket. Features secure hand pockets & chest pocket.

LEX0044-H **MSRP \$239.99**

D. LEXUS UNDER ARMOUR MEN'S CORPORATE REACTOR JACKET

The 100% polyester fabric is windproof to shield you from the elements. Coldgear® reactor intelligent insulation adapts to any activity. The jacket has a performance loose fit and packs easily into right side hand pocket. Features secure hand pockets & chest pocket.

LEX0043-H **MSRP \$239.99**



C.

D.

E. LEXUS LADIES' ROOTS73 FZ HOODY

This fresh-take on the classic Roots73 hoody features the Roots73 patch with the iconic red maple leaf and contrasting white hood with drawstring and zipper.

LEX0125-H **MSRP \$123.90**

F. LEXUS MEN'S ROOTS73 FZ HOODY

This fresh-take on the classic Roots73 hoody features the Roots73 patch with the iconic red maple leaf and contrasting white hood with drawstring and zipper.

LEX0126-H **MSRP \$123.90**





A. LEXUS LADIES WINTER GIFT SET
3 piece 100% knitted acrylic Toque, Gloves, and Infinity Scarf Set from the BDG Collection. Super soft and beautifully designed cold weather set provides comfort and protection from the winter cold.
Size » One Size
LEX0001-H **MSRP \$69.90**



B.

D.



E. LEXUS LADIES LACOSTE T-SHIRT
An essential T-shirt in soft 100% Pima cotton, finished with our signature croc logo.
LEX0080-H **MSRP \$79.90**

F. LEXUS MENS LACOSTE CREWNECK T-SHIRT
An essential T-shirt in soft, 100% Pima cotton, finished with our signature croc logo.
LEX0079-H **MSRP \$79.90**

A. LEXUS MEN'S THERMAL VEST
Sleek profile in an ultra-lightweight thermal fill vest with a high-density D/W/R outer shell and nylon taffeta lining, provides optimal thermal protection when you need it most.
LEX0050-H **MSRP \$114.95**

B. LEXUS MENS LEVELWEAR EQUINOX JACKET
Lightweight quilted jacket features scuba neck hood for wind protection, bungee toggles for adjustability, and thermal cell hood and sleeves.
LEX0049-H **MSRP \$179.95**



A.

B.



**FAST
FASHION.**

A. LEXUS LADIES KNIT BLAZER

Made with washable wool for easy care, it features a distinctive shawl collar, tapered waist and dropped back hem. This versatile knit blazer can take you from chic professional office attire to evening drinks. LEX0066-H **MSRP \$120.95**

B. LEXUS LADIES LONG JACKET

Sunice developed this double-knit softshell long jacket with Technospacer air-chamber technology to achieve thermal insulation in an extra lightweight stretch fabric. Versatile full-zip jacket styling with attached hood and zippered pockets. LEX0051-H **MSRP \$230.90**



C. LEXUS WOMEN'S 1/2 ZIP

1/2 zip pullover with brushed interior, stand up collar. LEX0069-H **MSRP \$84.90**

D. LEXUS PLUSH LOUNGE ROBE

Our Plush Lounge Robe is warm and comfortable - lightweight and remarkably breathable. Available in three sizes: S/M | L/XL | XXL. 100% polyester. LEX0062-H **\$74.95**





A.



B.

A. LEXUS LADIES' DIVA V-NECK TEE

Heather v-neck women's tee with simulated dip-dye appearance. 60% cotton / 40% polyester jersey, 3.5 oz.
LEX0112-H **MSRP \$34.90**

B. LEXUS MEN'S OAKLEY POLO

100% polyester. Tailored fit. Interlock fabrication. Double bar tack detail at bottom of placket.
LEX0124-H **MSRP\$69.95**



C.



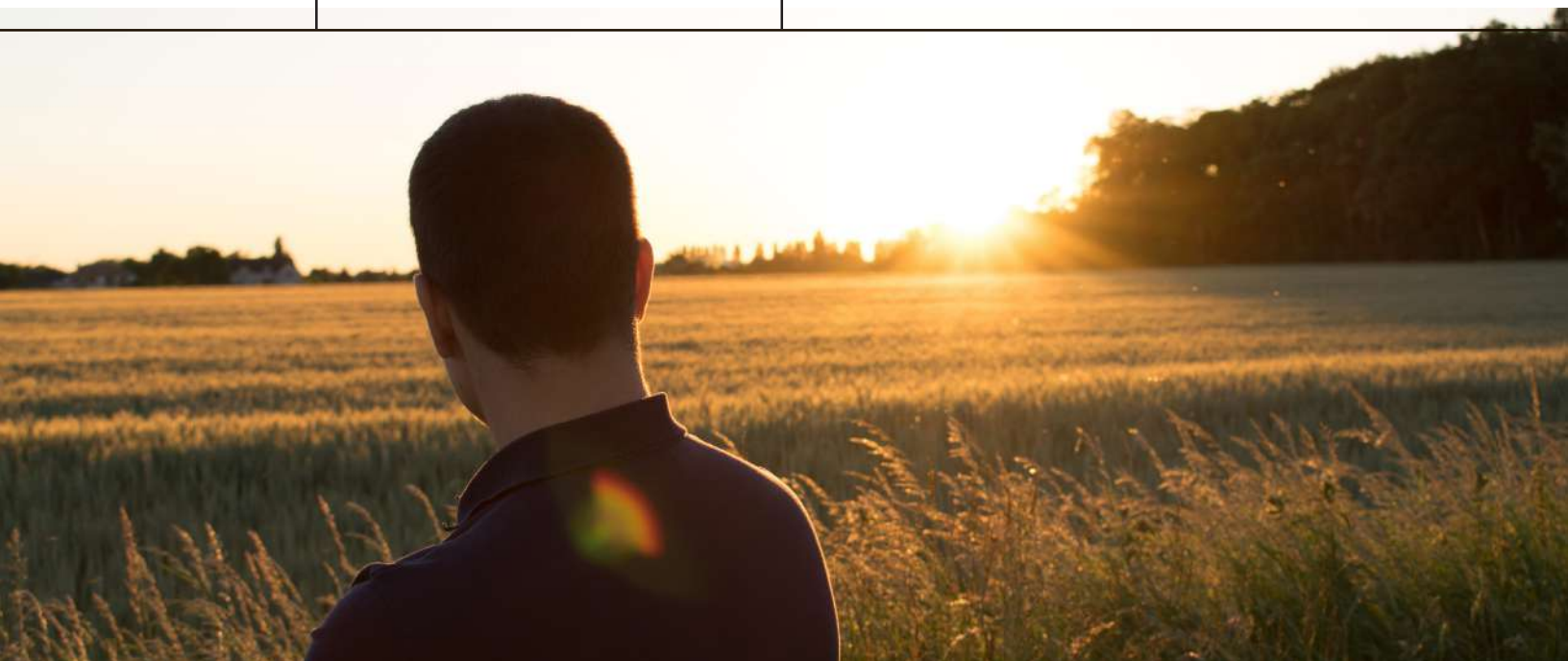
D.

C. LEXUS MEN'S OGIO® FRAMEWORK POLO

7.3-oz, 100% Polyester mini pique with stay-cool wicking technology. Self fabric collar. Bartack reinforcement on placket and back of collar. Moisture wicking. Anti-odour. Breathable. Tagless.
LEX0122-H **MSRP \$49.90**

D. LEXUS LADIES' OGIO® FRAMEWORK POLO

7.3-oz, 100% Polyester mini pique with stay-cool wicking technology. Self fabric collar. Bartack reinforcement on placket and back of collar. Moisture wicking. Anti-odour. Breathable. Tagless.
LEX0123-H **MSRP \$49.90**



E. LEXUS LADIES' UNDER ARMOUR POLO

95% polyester, 5% elastane. Smooth, soft anti-pick, anti-pill fabric has a cleaner, snag-free finish. Four-way stretch fabrication allows greater mobility in any direction. Anti-odour technology prevents the growth of odour causing microbes. 30+ UPF protects your skin from the sun. Durable self-fabric collar. Performance fit.
LEX0119-H **MSRP \$59.98**

F. LEXUS MEN'S UNDER ARMOUR POLO

95% polyester, 5% elastane. Smooth, soft anti-pick, anti-pill fabric has a cleaner, snag-free finish. Four-way stretch fabrication allows greater mobility in any direction. Anti-odour technology prevents the growth of odour causing microbes. 30+ UPF protects your skin from the sun. Durable rib-knit collar. Athletic loose fit.
LEX0120-H **MSRP \$59.98**



E.



F.

G. LEXUS MEN'S SUNICE ALLENDALE PULLOVER

Allendale half-zip pullover makes a smart, highly breathable performance layer on cool and windy days without making a sound! UV 50+ protection. Laser-cut welding at chest pocket. Contrast stitching adds a modern edge.
LEX0113-H **MSRP \$115.00**

H. LEXUS MEN'S UNDER ARMOUR CORP PERFORMANCE POLO

Smooth, soft anti-pick, anti-pill fabric has a cleaner, snag-free finish. 4-way stretch fabrication allows greater mobility in any direction. 30+ UPF protects your skin from the sun. Athletic loose fit.
LEX0121-H **MSRP \$63.90**



I. LEXUS LADIES' UNDER ARMOUR HOODIE

100% Polyester. Double Threat Armour Fleece is light, breathable and stretches for superior mobility. Ladies loose and relaxed fit. Shaped hem delivers enhanced coverage without looking big and bulky.
LEX0117-H **MSRP \$64.98**

J. LEXUS MEN'S UNDER ARMOUR HOODIE

100% polyester. UA Storm® technology repels water without sacrificing breathability. Double Threat Armour Fleece® is light, breathable & stretches for superior mobility. Loose, fuller cut for complete comfort. Front pocket with right-side internal phone pocket.
LEX0118-H **MSRP \$64.98**

BAGS + UMBRELLAS

A. LEXUS UNDER ARMOUR BACKPACK

Features compression molded shoulder straps & back panel for comfort. Easily accessible, TSA-friendly laptop sleeve supports up to 15" laptop and unzips to lay flat. Large main compartment, two side pockets, second zippered compartment, a soft, tricot lined phone pocket & elastic webbing perfect for storing chargers and cords. Front panel features many organizational features.

LEX0002-H **MSRP \$109.95**

B. LEXUS IGLOO® DELUXE COOLER

This 24 can capacity cooler features enhanced insulation, a leak resistant, heat-sealed antimicrobial liner, dual zippered opening with folding lid and hook and loop fastener for easy access, aluminum pull handle, front zippered pocket, side mesh water bottle pocket, side storage loops, metal Igloo bottle opener attached to bag, adjustable shoulder strap.

LEX0004-H
MSRP \$69.95

E. LEXUS PROJECT CARRY-ON BAG

International airline regulation carry-on size, has a crush resistant fur-lined valuables pocket, top custom injected soft grab handle, multiple reinforced soft grip handles, easy-entry main compartment LID opening, military grade zippers, internal mesh zippered compartment, internal garment organizing compression strap, and expands up to 2" for greater capacity. The lightweight aluminum telescopic luggage handle with 5" smooth ride urethane wheels.

LEX0078-H
MSRP \$264.90

C. RUME GTO | GARMENT TRAVEL ORGANIZER

Combines the ease of a folding garment bag and the convenience of multiple packing cubes into a single product. Designed to fit snugly when full into a standard rolling suitcase and hold multiple days' worth of clothes. Machine washable and water resistant, it measures 46"L 20"H 4"W. LEX0005-H **MSRP \$9.95**

D. LEXUS ZIPPERED CONVENTION TOTE

Features a zippered main compartment, hook and loop closure front slash pocket, phone and organizational pockets running along the base of the tote including a pen slot. D-ring and added corner detail to hang keys or water bottle.

LEX0005-H
MSRP \$9.95

D.

F.

F. LEXUS PROJECT LOOBAG

Large main pocket holds full-size toiletries, antibacterial side pocket lining to prevent odor, mildew and mold-causing bacteria. Top rotating hook displays bag from bar or rack and tucks away when not in use. Fur-lined valuables pocket and multiple mesh dividers to organize toiletries. Includes two travel sized containers.

LEX0006-H **MSRP \$59.90**

A.

B.

E.



A.

A. LEXUS BUGATTI LEATHER DUFFLE BAG

Genuine pebbled leather duffle bag. Equipped with an easy-access outer pocket and reinforced handles, this unisex duffel opens towards the center for a maximum loading capacity. Also has an inside zippered pocket.

LEX0003-H **MSRP \$379.90**



B.

B. LEXUS OGIO® CRUNCH DUFFEL

Features a large main compartment and front-facing zippered pocket, side storage pocket and shoe pocket on opposite end. Features all metal hardware, plastic-molded interlocking handle, adjustable padded shoulder strap.

LEX0007-H **MSRP \$74.90**



D.

D. LEXUS 48\"/>

The inverted design keeps you dry when closing, umbrella has a manual open, metal shaft for durability, tartan pattern underside, measures 29 1/2\"/>

closed.LEX0082-H

MSRP \$44.95



C.

C. LEXUS TELESCOPIC FOLDING UMBRELLA

Eight panel umbrella features 21\"/>

LEX0081-H **MSRP \$26.95**



E.

E. LEXUS AUTO OPEN SLAZENGER™ GOLF UMBRELLA

Automatic opening mechanism. Extra large vented canopy. Golf club grip inspired Slazenger™ handle. Includes carrying case with shoulder strap.

Diameter: 64\"/>

LEX0107-H

MSRP \$58.90



E. LEXUS BUGATTI HARD LUGGAGE CARRY-ON

Light weight ABS hard shell luggage features multi-organizational section with padded section, fully lined interior, three main zippered compartments, four multi-directional wheels for effortless rolling, perfectly sized for carry-on usage.

LEX0077-H **MSRP \$164.90**

E.





ELECTRIFYING EFFICIENCY

Always pushing the boundaries of not only what can be done, but what should be done, Lexus is the leader in hybrid technology development. Our Self-Charging Hybrids provide enhanced powertrains that pair impressive fuel efficiency with cleaner emissions, so you never compromise on performance, or an enjoyable driving experience.²¹

CLAS

BUSINESS ESSENTIALS

A. LEXUS LARGE JOURNAL

This 240 page journal features a gold ribbon marker, ivory pages with gray lines, back cover paper pocket, pen loop, elastic closure, and uses FSC compliant paper. Sized at 7.5625" W x 9.9375" H. LEX0008-H

MSRP \$27.90



B. LEXUS MOLESKINE® NOTEBOOK

"This 240 page FSC certified Moleskine notebook is a most reliable travel companion perfect for notes, sketches and thoughts. Bound hard cover with rounded corners, bookmark and elastic strap closure featuring ruled format pages using acid-free paper, an expandable inner pocket.

LEX0015-H **MSRP \$45.95**

B.



WRITING INSTRUMENTS

A. LEXUS CROSS ATX BALLPOINT PEN

Features a comfortably tapered medium-diameter barrel with a unique integrated rounded clip. Lifetime mechanical guarantee. Packaged in a premium gift box.

LEX0012-H **MSRP \$94.95**

A.

B.

C.

D.

B. LEXUS ROLLER BALL PEN

Executive style capped roller ball pen with unique four sided barrel and spring loaded clip. The pen has a black matte finish with polished chrome accents and uses a standard international refill with blue ink. It comes packaged in a black triangular box.

LEX0009-H **MSRP \$19.95**

C. LEXUS APOLLO PEN

Solid brass, twist mechanism ball pen with sleek, rounded aerodynamic top. Equipped with a metal, large capacity Parker type refill with blue ink.

LEX0010-H **MSRP \$14.90**

D. LEXUS TRITON PEN

Solid brass, twist mechanism ball pen with flexible split clip and unique four sided lower barrel for optimal gripping. Equipped with a metal, large capacity Parker type refill with blue ink. Matte champagne with silver accent.

LEX0011-H **MSRP \$14.90**



All packaged with premium gift box.

F.

E. LEXUS HE PEERLESS FONDERIE 47 COLLECTOR'S - EDITION PEN

This pen is inspired by the design of the AK47 and bears design features of the gun itself. Each pen features black PVD plating with 23KT gold-plated appointments, a moniker disk of transformed AK47 steel, and the unique serial number of a gun destroyed to create it. Your purchase of a pen funds the destruction of one AK47 in Africa – another weapon that will never again be used to threaten or to take a life.

LEX0013-H **MSRP \$399.90**

F. LEXUS CROSS X LIBERTY UNITED COLLECTOR'S EDITION ROLLERBALL PEN

Cross is proud to partner with Liberty United to take action in the fight against gun violence. By purchasing this beautifully crafted writing instrument, you help give new hope by supporting programs that educate and protect at-risk children in the most violent neighborhoods in America. Presented in a luxury gift box that includes a Liberty United presentation stand. 20% of profits fund programs that support kids affected by gun violence in America.

LEX0014-H **MSRP \$129.95**



| THE ESSENCE OF | INNOVATION

Never one to remain idle, the IS pushes the boundaries of the imagination in pursuit of a purer driving experience. A striking silhouette offers a tantalizing preview of what's to come. A luxuriously detailed and high-tech interior puts

you behind the wheel of a vehicle that commands every single one of your senses. From the design to the exciting performance, every aspect hones the drive into a refined state of exhilaration. The open road awaits.



PURPLE CHILDREN



A. LEXUS JUICY DRINK BOX

Refillable, recyclable, and cost efficient, this environmentally friendly juice box is perfect for school, picnics, and BBQs. Made from virtually indestructible shock resistant Tritan plastic, this freezable, scratch resistant, and 100% BPA free juice box is both dishwasher and food grade safe. Comes with two reusable food grade silicone straws.

LEX0016-H **MSRP \$19.90**

A.

B. LEXUS COLOURING BOOK

The popular North American made Zen coloring book includes a 6-piece set of FSC certified 7" assorted color wood coloring pencils. This eco-friendly set is an excellent and conscientious relaxation tool for today's bustling world.

LEX0019-H **MSRP \$9.95**



B.



C. LEXUS LAMBSWOOL KID'S BLANKET

This luxurious 30" x 45" Lambswool throw features micro fur on one side and the coziness of faux lambswool on the other.

LEX0017-H - BLUE

LEX0018-H - PINK

MSRP \$45.95

C.



STRONG

DRINKWARE



B.



C.

B. LEXUS ASOBU BOTTLE

The fashion forward URBAN line of bottles is a must have accessory! This vacuum insulated double wall stainless steel Urban bottle will keep 16 oz / 460 ml of your favorite refreshment cool up to 24 hours! The leakproof lid and easy grip texture make it a practical travel companion.

LEX0020-H **MSRP \$29.90**

C. LEXUS COPPER VACUUM INSULATED BOTTLE 20OZ

With its innovative cork look, screw-on lid design, this durable 20oz. double-wall stainless steel vacuum bottle with copper insulation enables your beverage to stay cold for 48 hours and hot for at least 12 hours. Fits most standard car cup holders.

LEX0024-H **MSRP \$31.95**

D. LEXUS CLARITY TUMBLER

Double Wall Glasses are mouth blown by expert artisans. Each piece is individually handmade and the double wall glass construction gives each glass thermal properties to help to keep hot drinks warmer and cool drinks cooler. The double wall construction keeps the glass cool to the touch and eliminates condensation.

LEX0022-H **MSRP \$19.95**

E. LEXUS CLARITY MUG

Double Wall Glasses are mouth blown by expert artisans. Each piece is individually handmade and the double wall glass construction gives each glass thermal properties to help to keep hot drinks warmer and cool drinks cooler. The double wall construction keeps the glass cool to the touch and eliminates condensation.

LEX0021-H **MSRP \$19.95**



D.



E.

F.

G.



F. LEXUS DESK MUG

Feel like a coffee taster every day! The fluted shape of this ceramic mug is designed to capture the coffee aromas for the nose and concentrate the flavors into every sip of coffee you take. Features a glossy interior and matte exterior finish.

LEX0023-H **MSRP \$14.90**

G. LEXUS CONTIGO® SHAKE & GO® - 20OZ

Make it, shake it, take it – It might look elegant and pristine, but the Shake & Go® Tumbler loves to get a little crazy and shake things up. Iced tea, coffee, water enhancers to more adult beverages can be mixed with no leaks or spills.

LEX0030-H **MSRP \$31.95**



A. LEXUS F ARCTIC ZONE® TITAN THERMAL HP® COPPER TUMBLER 20OZ

Our trendy and durable finish 20oz. tumbler is made from double-wall 18/8 grade stainless steel vacuum construction with copper insulation. Your beverage will stay cold for 24 hours and hot for at least 8 hours. The easy sipping, push-on lid with slide closure has aide opening for comfortable filling and pouring. LEX0026-H **MSRP \$44.95**



B. LEXUS COPPER VACUUM GIFT SET

This gift set includes the 22oz. Thor bottle and 22oz. Thor Tumbler. Durable, double-wall stainless steel vacuum construction with copper insulation allows your cold beverage to stay cold for 24 hours and hot for at least 6 hours. There might be a tiny color variance across the components in a set. LEX0029-H **MSRP \$54.95**



C.



D.

C. LEXUS VACUUM TUMBLER

This 14oz. tumbler features an innovative leak-proof lid with a 360-degree drink top that opens and closes with a push of a button. Stainless steel vacuum-sealed construction. Keeps drinks hot for 5 hours and cold for 15 hours. LEX0028-H **MSRP \$29.90**

D. LEXUS COPPER VACUUM INSULATED BOTTLE 20OZ

Durable, double-wall stainless steel vacuum construction with copper insulation allows 20oz. of your favourite beverage to stay cold for 48 hours and hot for at least 12 hours. Stainless steel screw-on, spill resistant lid with a wide opening for comfortable filling and pouring. Perfect for ice cubes. Fits most standard car cup holders. LEX0027-H **\$31.95**

E.



G.



E. LEXUS F SPORT HUGO INSULATED BOTTLE - 18OZ

This double-wall vacuum insulated bottle keeps drinks hot for 5 hours and cold for 15 hours. Leak-proof locking cap. LEX0032-H **MSRP \$29.90**

F. LEXUS S'WELL BOTTLE

Made of vacuum-insulated, high-grade 8/18 stainless steel. Triple-walled Thermo-S'well technology keeps beverages cold for up to 24 hours and hot for up to 12, and maintains a condensation-free exterior. Eco-friendly, BPA-free and reusable. 17 oz. LEX0143-H **MSRP \$45.80**

G. LEXUS F SPORT AVIANA STAINLESS BOTTLE - 20OZ

This 20oz. double wall vacuum insulated bottle is made of high-grade 18/8 stainless steel with a sweatproof design. Leak-proof lid is insulated with a nonslip grip and stainless steel accents and features an extra-large opening to easily add ice to your beverage. The bottle does not retain odors or flavors and the lid is dishwasher safe (top rack) while the bottle should be hand washed. LEX0033-H **MSRP \$45.95**



CHEERS

TO

PERFORMANCE



A.

B.

C.

A. LEXUS ASOBU FLAVOUR U SEE BOTTLE

This double wall insulated bottle will stay cold for up to 12 hours. The clear Tritan™ see through center section suspends the fruit, mint or other contents in your chilled water between two filters preventing any bulk pulp from entering the drinking section.

LEX0099-H **MSRP \$34.90**

B. LEXUS MINI DIVA BOTTLE

It's easy to grip and can be opened or closed with one hand. holds your favourite beverage cool for up to 24 hours or hot for 12 hours! Vacuum insulated / dual copper plated insulation. Soft push button.

100% BPA free. Dishwasher proof. LEX0100-H **\$34.90**

C. LEXUS COMPACT TUMBLER

The perfect size cup with its snug, easy grip handle and flip top lid. Made of double wall, vacuum insulated stainless steel which keeps beverage HOT up to 12 hours. BPA free. Dishwasher proof.

LEX0031-H **\$29.90**



D.

E.

D. LEXUS LIBERTY CANTEEN

Vacuum insulated, keeps your beverage hot up to 12 hours, cold up to 24 hours. Durable 18/8 stainless steel body with easy grip texture.

Wide mouth for adding ice cubes and easy cleaning. BPA free and durable plastic push button flip top lid.

LEX0047-H **MSRP \$29.95**

E. LEXUS CAMELBAK EDDY®

BPA-free durable Tritan™ material. Shatter, stain, and odour resistant.

Enjoy spill-proof sipping at work or on the trail with the eddy® water bottle. Screw-on lid with spill-proof bite valve and one-finger carry handle.

No tip drinking, simply flip open bite valve & sip. Wide mouth opening for easy cleaning and filling.

Capacity: 25 oz.

LEX0048-H **MSRP \$29.90**



F. LEXUS COPPER VACUUM INSULATED BOTTLE

Durable, double-wall 18/8 grade stainless steel vacuum construction with copper insulation, which allows your beverage to stay cold for 48 hours and hot for at least 12 hours. The construction also prevents condensation on the outside of the bottle. Features on-trend, durable powder coating. Stainless steel, screw-on, spill resistant lid. Fits most standard car cup holders. Capacity: 17 oz.

LEX0105 **MSRP \$24.90**

G. LEXUS CONTIGO® WEST LOOP TUMBLER

This larger capacity mug is spill-proof, will stay piping hot for up to 7 hours or cold for 18 hours with its THERMALOCK™ Vacuum Insulation. It's easy to use with just one hand. Fits most car cup holders. BPA free. Capacity: 16 oz.

LEX0106 **MSRP \$239.99**



F.

G.

H. LEXUS LADIES KNIT BLAZER

Made with washable wool for easy care, it features a distinctive shawl collar, tapered waist and dropped back hem. This versatile knit blazer can take you from chic professional office attire to evening drinks.

LEX0066-H **MSRP \$120.95**

I. LEXUS LADIES LONG JACKET

Sunice developed this double-knit softshell long jacket with Technospacer air-chamber technology to achieve thermal insulation in an extra lightweight stretch fabric. Versatile full-zip jacket styling with attached hood and zippered pockets.

LEX0051-H **MSRP \$230.90**



H.

I.



J.

K.

J. LEXUS REIDEL CABERNET MERLOT STEMLESS GLASSES

Cabernet Merlot 21-1/8 oz. RIEDEL stemless crystal S/2 in an Onyx gift box.

LEX0103-H **MSRP \$49.95**

K. LEXUS REIDEL MERLOT / SYRAH

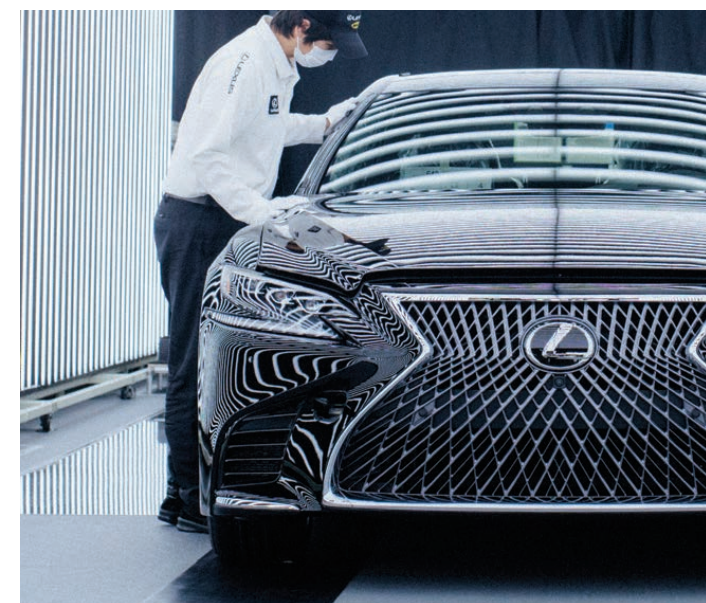
Merlot decanter & Syrah wine RIEDEL

crystal gift set in a Raven gift box.

LEX0102-H **MSRP \$124.95**

EXPERIENCE SOMETHING GREATER

From the start, Lexus has redefined luxury. The Japanese principle of Omotenashi brings unrivaled Guest hospitality, with a dedication to treating everyone with warmth, care and respect as if they were a Guest in our own home. While cutting-edge design and exceptional attention to detail show the meticulous craftsmanship of legendary Lexus Takumi Masters. Along with pioneering innovations, impassioned designs and a thirst for enhancing every drive, it's a luxury experience unlike any other.



DRIVE LINE

GOLF

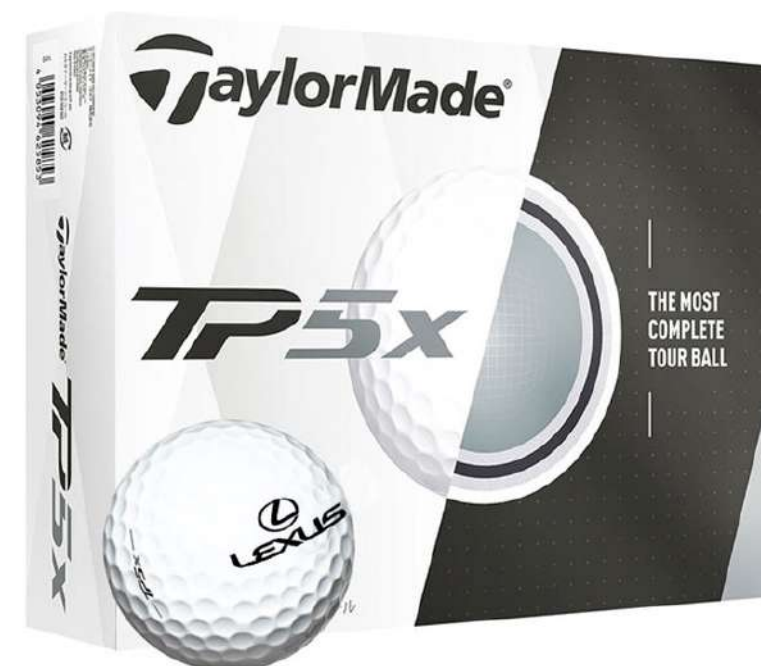


A. LEXUS TITLEIST PRO V1 GOLF BALLS

Each element of a Titleist Pro V1 golf ball is precisely designed to work together delivering total performance and extreme consistency for every player on every shot. Pro V1 features extraordinary distance, very low long game spin, penetrating flight, Drop-and-Stop™ control and very soft feel.

LEX0086 **MSRP \$69.90**

A.



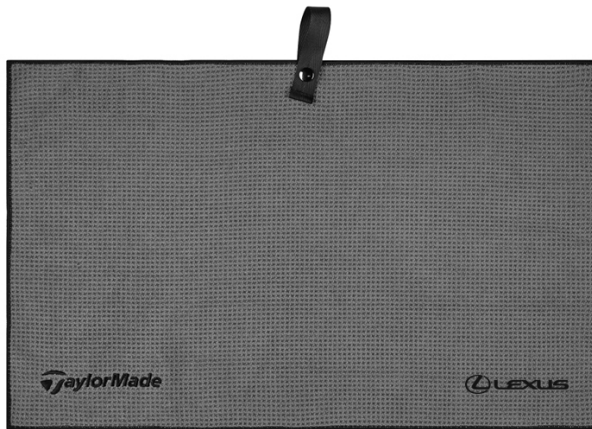
B.

B. LEXUS TAYLORMADE TP5X GOLF BALLS

The TP5x ball features varying 5-layer constructions that are specifically engineered to perform with every club.

LEX0054-H **MSRP \$64.95**

A.



A. LEXUS TAYLORMADE GOLF TOWEL

Keep your grooves clear and your clubs clean with a TaylorMade's microfiber cart towel. Soft and absorbent waffle-weave construction.

Nylon webbing bag loop. TaylorMade embroidery.

Material: 85% polyester, 15% polyamide

Dimensions: 15" x 24"

LEX0139-H **MSRP \$37.50**

B. LEXUS TAYLORMADE CART LITE BAG

TaylorMade's Cart Lite Bag has been specially designed for pushcart compatibility. An engineered top shape and trolley notch in the base make for a perfect push cart fit while tarpaulin reinforcements ensure no wearing or tearing when using cart straps. Stay organized with a 14-way organizational top, two micro-suede valuables pockets, full-length dividers to eliminate club crowding, and easily accessible insulated water bottle pocket. Ten pockets in total. Crush-resistant construction. Weight: 5 Lbs. LEX0138-H **MSRP \$299.90**



C.

C. LEXUS TAYLORMADE GOLF SHOE BAG

Keep your shoes and your game looking fresh with the new Players Shoe Bag from TaylorMade. Features include: ergonomic carry handle, ventilated side ports, high-density printed TaylorMade logo, and 900D construction.

Dimensions: 14" x 10" x 5.5"

LEX0082-H **MSRP \$44.95**



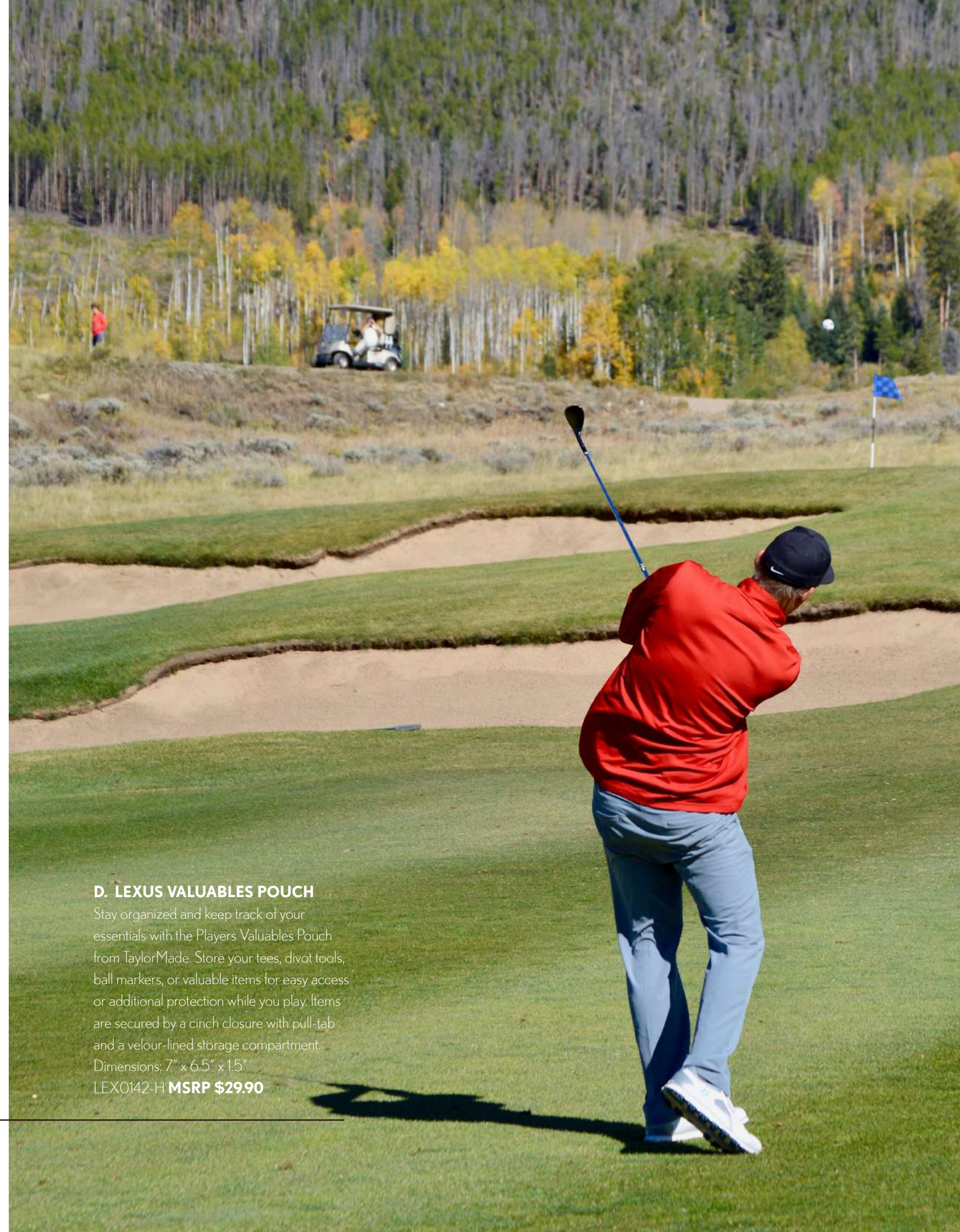
D.

D. LEXUS VALUABLES POUCH

Stay organized and keep track of your essentials with the Players Valuables Pouch from TaylorMade. Store your tees, divot tools, ball markers, or valuable items for easy access or additional protection while you play. Items are secured by a cinch closure with pull-tab and a velour-lined storage compartment.

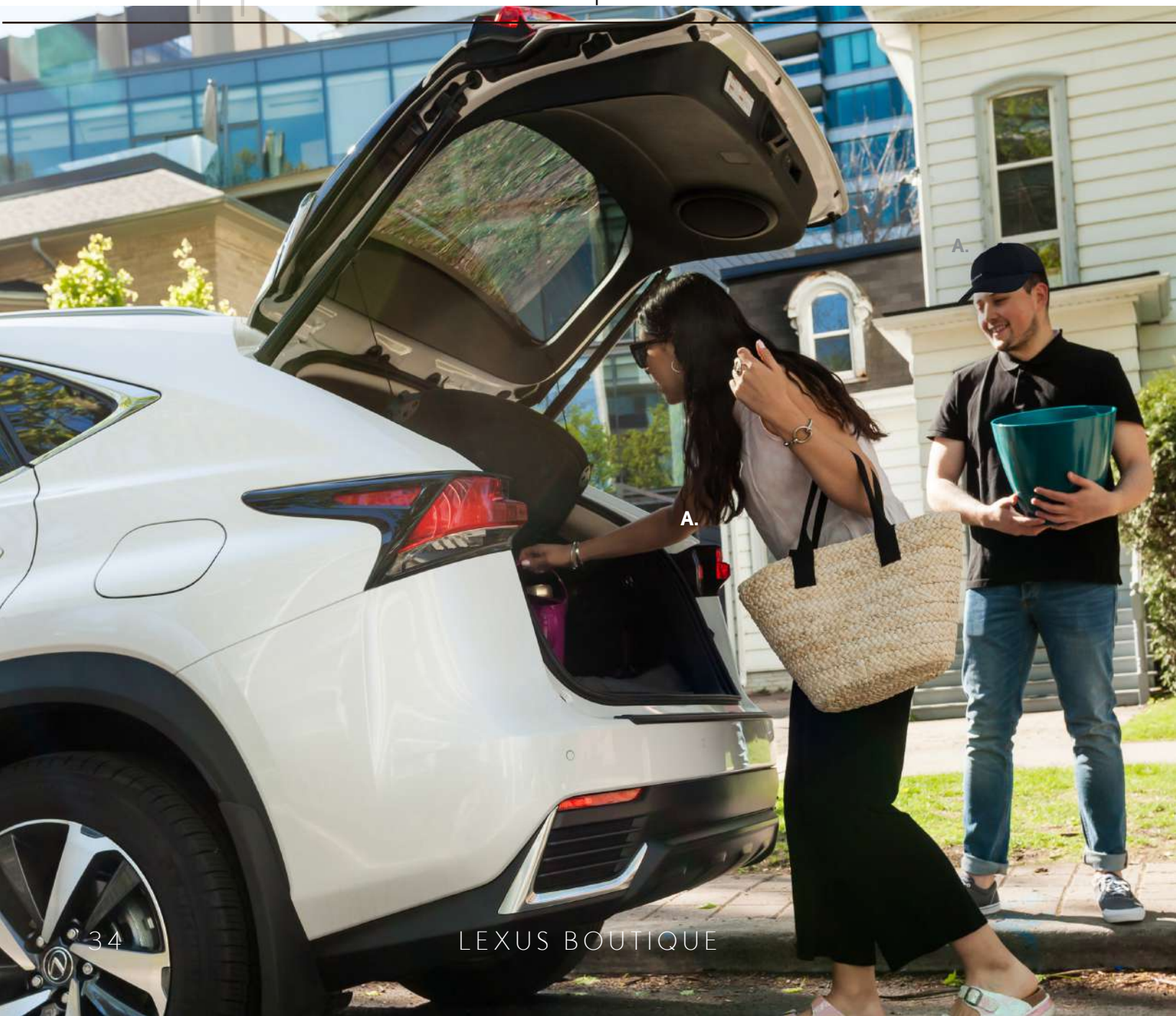
Dimensions: 7" x 6.5" x 1.5"

LEX0142-H **MSRP \$29.90**



SPORT

HEADWEAR



A.



A. LEXUS NIKE HAT

100% ripstop polyester with Dri-FIT technology. 6 panel cap features embroidered Nike swoosh on back, soft hook-and-loop closure and embroidered eyelets.

LEX0041-H **MSRP \$39.90**



B.

B. LEXUS NEW ERA® HAT

100% polyester 6-panel cap with gentle stretch to conform to your own individual shape.

LEX0039-H **MSRP \$39.90**



C.

C. LEXUS POM POM TOQUE

Heavyweight rib knit toque with cuff and pom pom.

LEX0037-H **MSRP \$24.95**



D.

D. LEXUS BEANIE

This beanie with microfleece lining provides a great fit and warmth.

LEX0038-H **MSRP \$24.95**



E. LEXUS TWEED HAT

Ferst-DRY™ moisture wicking structured Milan tweed cap.

LEX0036-H **MSRP \$19.90**



F. LEXUS LACOSTE SPORT HAT

100% polyester used in this resilient, lightweight cap in diamond weave taffeta. Perfect for training, this ultra-dry technical fabric has tone-on-tone topstitching and a green crocodile transfer.

LEX0042-H **MSRP \$64.95**

LEXUS CAN'T KEYCHAINS & CAR ACCESSORIES



A. LEXUS DELUXE CARGO BOX

Sturdy cargo box with 3 large compartments to organize and store groceries, car related items, and much more. Includes removable cooler designed to fit in middle compartment. This great addition to your trunk is collapsible for easy storage with sturdy, padded grab handles and mesh pockets.

The cooler has a 20 can capacity.

LEX0068-H **MSRP \$69.90**

B. LEXUS POWER OUTAGE KIT

This barrel bag features reinforced handles and a bottom hook and loop strip that adheres to carpet. Includes: Dynamo solar AM-FM radio/flashlight with USB powered by hand crank, solar AC/DC adapter recharge or USB port; 3 LED flashlight, mini USB port; water-resistant, CE, FCC compliant Rubberized flashlight with 2 mercury-free heavy-duty "D" batteries 2 emergency candles Safety matches Light stick (10 hours) with lanyard Emergency Mylar blanket

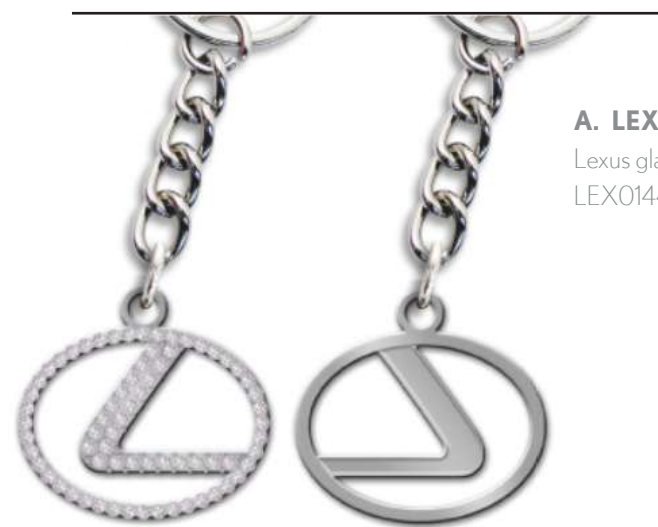
LEX0108-H **MSRP \$69.90**

C. LEXUS SAFETY HAMMER MULTI-TOOL W/ DIGITAL TIRE GAUGE

This perfect emergency multi tool features 9 multi-function tools: Safety hammer with hardened steel point and razor sharp seatbelt cutter, Digital Tire Pressure Gauge w/ red LED light measuring PSI/kPa/BAR, max. 100 PSI, LED Torchlight with AAA battery & button cell battery included, tools including pliers, scissors, Phillips screwdriver and flat screwdriver.

LEX0060-H **MSRP \$27.90**





A. LEXUS GLAMOUR KEYCHAIN

Lexus glamour keychain in velour pouch.
LEX0144-H **MSRP \$14.90**



G. LEXUS SWIRL KEYCHAIN

Lexus Swirl molded keychain in velour pouch.
LEX0145-H **MSRP \$15.90**



H. LEXUS LEATHER KEYCHAIN

Lexus leather key fob in velour pouch.
LEX0146 **MSRP \$13.90**

G.

H.

B. LEXUS METAL KEYCHAIN

L Symbol metal keychain
in velour pouch.
LEX0147-H
MSRP \$18.90



C. LEXUS KEY FOB

Lexus key fob with little
jump rings in velour pouch.
LEX0148-H
MSRP \$16.80



B.

D.

E.

F.



E. LEXUS F LOGO KEYCHAIN

Keychain features F
with black and blue fill.
LEX0150-H
MSRP \$13.90

F. LEXUS F SPORT KEYCHAIN

F Sport key ring
in velour pouch.
LEX0151-H
MSRP \$13.40

ACCESSORIZE WITH STYLE.

LIFESTYLE

A. LEXUS HOME THROW

The Urban Alpaca Home Throw is the ultimate plush throw. Soft micro fur reversed with the softest, most luxurious faux alpaca wool. 60" x 70"

LEX0061-H **MSRP \$79.95**

A.

B. LEXUS FOSSIL BIFOLD WALLET

The slim Neel wallet in washed grain leather holds credit cards and folded bills in a pared-down silhouette. Features 1 bill compartment, 2 ID windows, 2 slide pockets and 8 credit card slots in a wallet.

LEX0056-H **MSRP \$74.90**

B.

C. LEXUS FOSSIL RFID ZIP AROUND CLUTCH

This leather zip around clutch features 12 credit card slots, an interior zip pocket, a gusseted coin pocket and a detachable wristlet strap. Includes 2 bill compartments, 12 credit card slots, 1 zipper pocket and 3 gusseted pockets.

LEX0057-H **MSRP \$94.90**

C.

D.

D. LEXUS OSAKA BENTO LUNCH BOX

Carry your meals in style, all made from BPA-free plastic materials.

Complete utensil set includes fork, knife, and spoon that packs into box, along with two stackable compartments for separating and organizing meals and snacks. Compartment lids have ventilation ports for microwaving food.

LEX0059-H **MSRP \$39.90**

E. LEXUS LUMENS 2-IN-1 LANTERN

At just 2.75" W x 3.5" H in size, it delivers 300 lumens of light using COB (Chip On Board) LED technology that looks like a lighting panel with multi LED lights packaged together. Simply pull up to turn on or close and open again for a different type light. Extends up to 7" high. You can set it as a bright lantern or a replica camp fire. Includes 3 AA mercury-free batteries and two wired carry handles/hangers.

LEX0055-H **MSRP \$14.90**

S L E X T E C H N O L O G Y



B.

A.

A. LEXUS BOOMPODS™ HEADPHONES

Flexible and lightweight headband wraps easily around your head for maximum comfort, sweatproof with an IPX6 rating, angled earbuds ensure a secure fit in your ears. Pair and play music in seconds and control your phone or media player from a listening range of 10m/33ft for up to 6 hours straight.

LEX0065-H **MSRP \$68.90**

B. LEXUS WIRELESS CHARGER WITH 10000 MAH POWER BANK

2 in 1 Dual USB port external battery charger with LED flashlight, wireless charger with 10,000mAh power bank.

LEX0076-H **MSRP \$68.90**



C.

C. LEXUS WIFI SPEAKER WITH AMAZON ALEXA

Using either Wi-Fi or Bluetooth, this speaker is integrated with Amazon Alexa Voice Service. Up to five hours of play time on a single charge and a 5 Watt speaker output. The Vale speaker can also be paired with other Alexa enabled products.

LEX0083-H **MSRP \$184.90**



D.

D. LEXUS OUTDOOR BLUETOOTH SPEAKER WITH AMAZON ALEXA

Take Alexa with you into the great outdoors! Alexa can now operate from your Bluetooth. With a 5 Watt output the speaker will fill any room or campsite. The speaker is sealed tight with a waterproof rating of IPX6, you don't have to worry about your speaker getting wet.

With over 6hrs of playback time at max volume you don't need to worry about charging the speaker every couple of hours.

LEX0074-H **MSRP \$94.90**

DRIFT

WATCHES



LEXUS BOUTIQUE



**A. LEXUS F SPORT
FOSSIL WATCH**
"Mastering the balance of vintage
inspiration with modern design, this
timepiece encapsulates the minimalistic
aesthetic from its clean face to its
slimmed-down case, which sits effortlessly
against the wrist. The watch features
a 44mm case surrounding a Quartz
movement, Stainless Steel bracelet, and
provides water resistance down to 5
atmospheres.
LEX0052-H **MSRP \$199.95**

**B. LEXUS FOSSIL GEN 4
SMARTWATCH
- EXPLORIST HR**
This 45mm Explorist HR touchscreen
smartwatch features a black silicone
strap, and lets you track your heart rate,
receive notifications, customize your dial
and more. Powered by Google's Wear
OS, it provides functions such as Heart
Rate Tracking / GPS / Google Pay™ /
Swimproof / Notifications / Personalize
Your Dial / Control Your Music /
Interchangeable Watch Band.
LEX0072-H **MSRP \$364.99**

D.

**D. LEXUS MICHAEL KORS
LEXINGTON WATCH**
Designed with the jet-set lifestyle in mind, the
Lexington watch brings sleek and streamlined
to a whole new level. The black-tone stainless
steel silhouette showcases a date function and
chronograph dials for a dynamic finish. Features
an oversized 44mm case surrounding a quartz/
chronograph movement that is water resistant up to
10 atm. Bracelet uses a clasp fastner.
LEX0085-H **MSRP \$384.90**

**E. LEXUS MICHAEL KORS
LEXINGTON WATCH**
Designed with the jet-set lifestyle in mind, the
Lexington watch brings sleek and streamlined
to a whole new level. The silver-tone stainless
steel silhouette showcases a date function and
chronograph dials for a dynamic finish. Features
an oversized 44mm case surrounding a quartz/
chronograph movement that is water resistant up to
10 atm. Bracelet uses a clasp fastner.
LEX0084-H **MSRP \$384.90**



E.

BRITISH COLUMBIA

Open Road Lexus Richmond, BC (604) 273-5533
Jim Pattison Lexus Victoria, BC (250) 386-3516
Regency Lexus Vancouver, BC (604) 739-1212
Jim Pattison Lexus Northshore North Vancouver, BC (604) 982-0033
Open Road Lexus Port Moody, BC (604) 461-7623
Lexus of Kelowna Kelowna, BC (250) 448-0990

ALBERTA

Lexus of Calgary Calgary, AB (403) 225-3987
Lexus of Edmonton Edmonton, AB (780) 466-8300
Lexus South Pointe Edmonton, AB (780) 989-2222
Lexus of Royal Oak Calgary, AB (403) 296-9600

SASKATCHEWAN

Ens Lexus Saskatoon, SK (306) 653-6777
Taylor Lexus Regina, SK (306) 569-8777

MANITOBA

Birchwood Lexus Winnipeg, MB (204) 889-3700

ONTARIO

Performance Lexus St. Catharines, ON (905) 934-3336
Ken Shaw Lexus Toronto, ON (416) 766-1155
Lexus Downtown Toronto, ON (416) 603-9100
Tony Graham Lexus Ottawa, ON (613) 225-2223
Lexus of London London, ON (519) 680-1900
Heffner Lexus Kitchener, ON (519) 748-9668
Lexus on the Park Toronto, ON (416) 391-1600
Bel-Air Lexus Ottawa, ON (613) 741-3270
Lexus of Oakville Oakville, ON (905) 847-8400
Northwest Lexus Brampton, ON (905) 494-1000
Lexus of Richmond Hill Richmond Hill, ON (905) 883-8812
Lexus of Windsor Windsor, ON (519) 979-1900
Erin Park Lexus Mississauga, ON (905) 828-7727
Don Valley North Lexus Markham, ON (905) 475-1625
Lexus of Barrie, Barrie ON (705) 722-7955
Lexus of Kingston, Kingston ON (613) 634-5555
Lexus of Lakeridge, Ajax ON (905) 619-7166

QUÉBEC

Spinelli Lexus Lachine, QC (514) 634-7171
Spinelli Lexus Pointe-Claire Pointe-Claire, QC (514) 694-0771
Lexus Laval Laval, QC (450) 686-2710
Boulevard Lexus Quebec, QC (418) 681-2121
Lexus Gabriel Brossard Brossard, QC (450) 923-7777
Lexus Gabriel St.-Laurent, St.-Laurent QC (514) 747-7777
Park Avenue Lexus Sainte-Julie Ste-Julie, QC (450) 922-1833

NOVA SCOTIA

O’Regan’s Lexus Halifax, NS (902) 453-2331

NEW BRUNSWICK

Lexus of St-John St-John, NB (506) 642-5398



www.lexus.ca 1-800-26-LEXUS
Lexus, One Toyota Place, Toronto, Ontario M1H 1H9

All illustrations and specifications contained in this brochure are based on the latest product information available at time of publication. Lexus Canada reserves the right to make any changes at any time, without notice, in colours, materials, specifications and pricing. Any variations in colours shown are due to the reproduction variations in the printing process.
Printed in Canada. Printed on recycled paper.